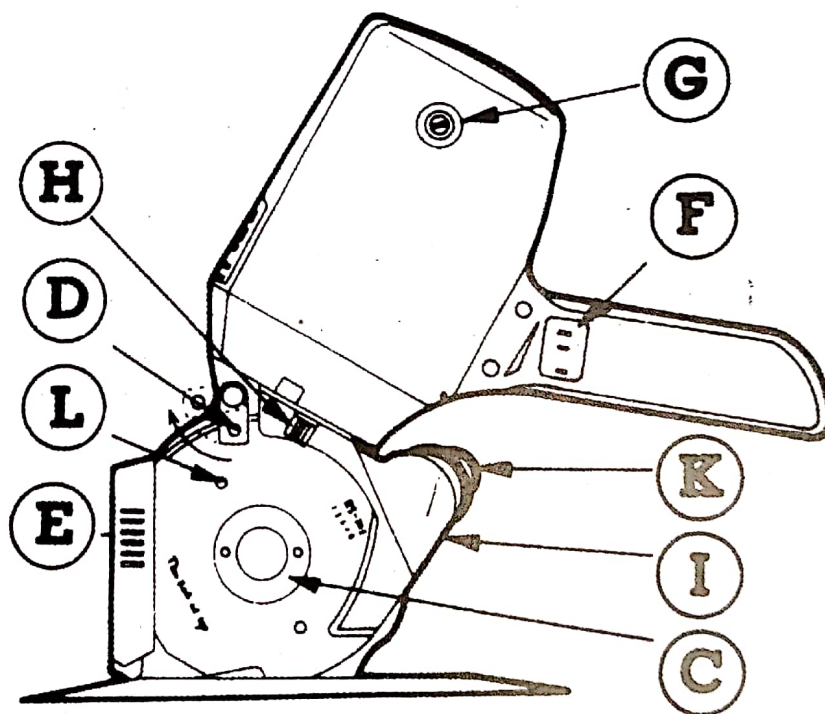
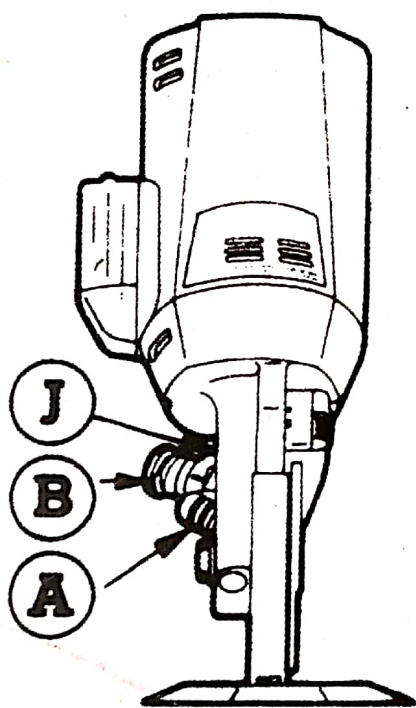
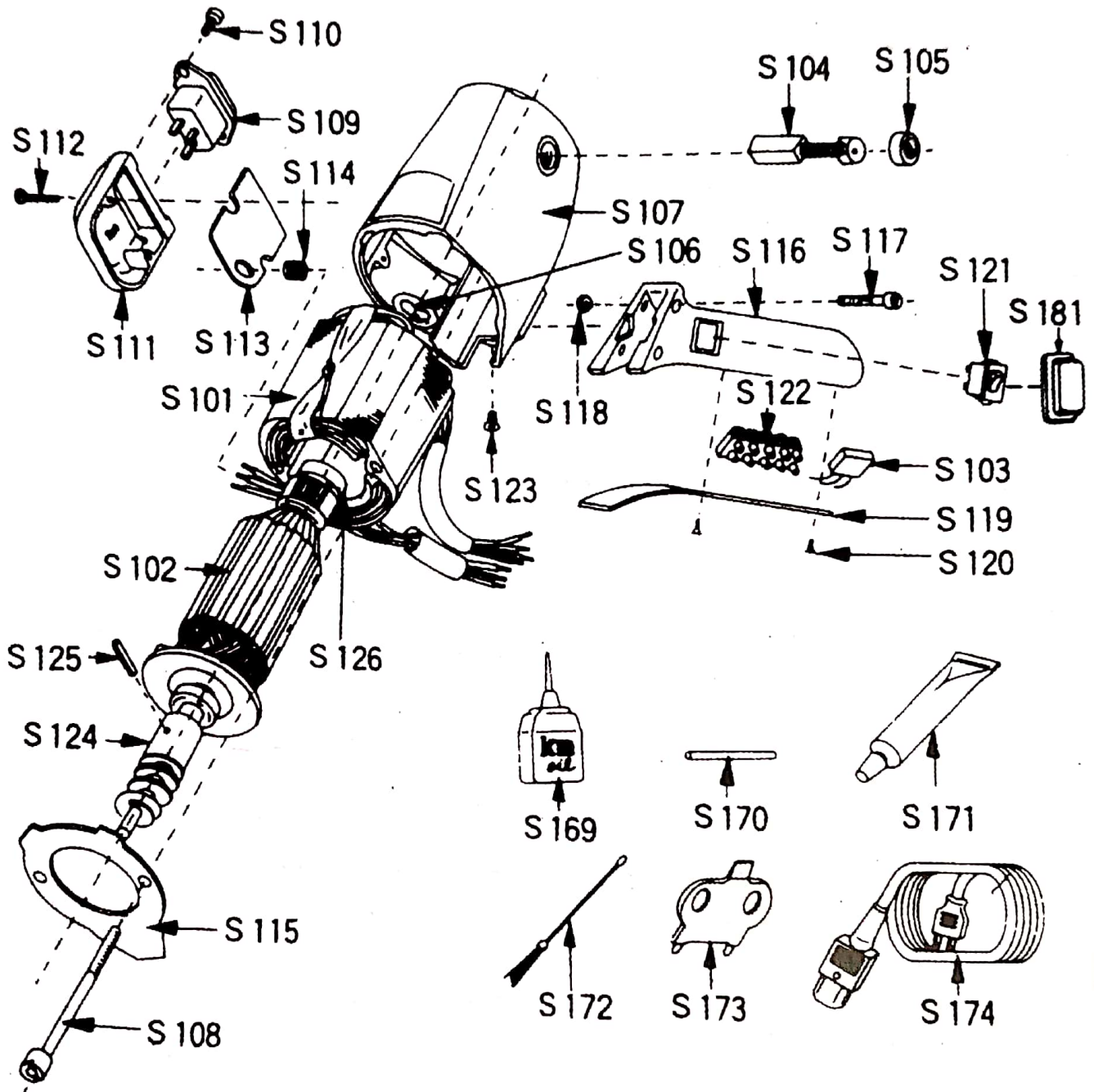


OPERATION-LUBRICATION-CARE

MODEL



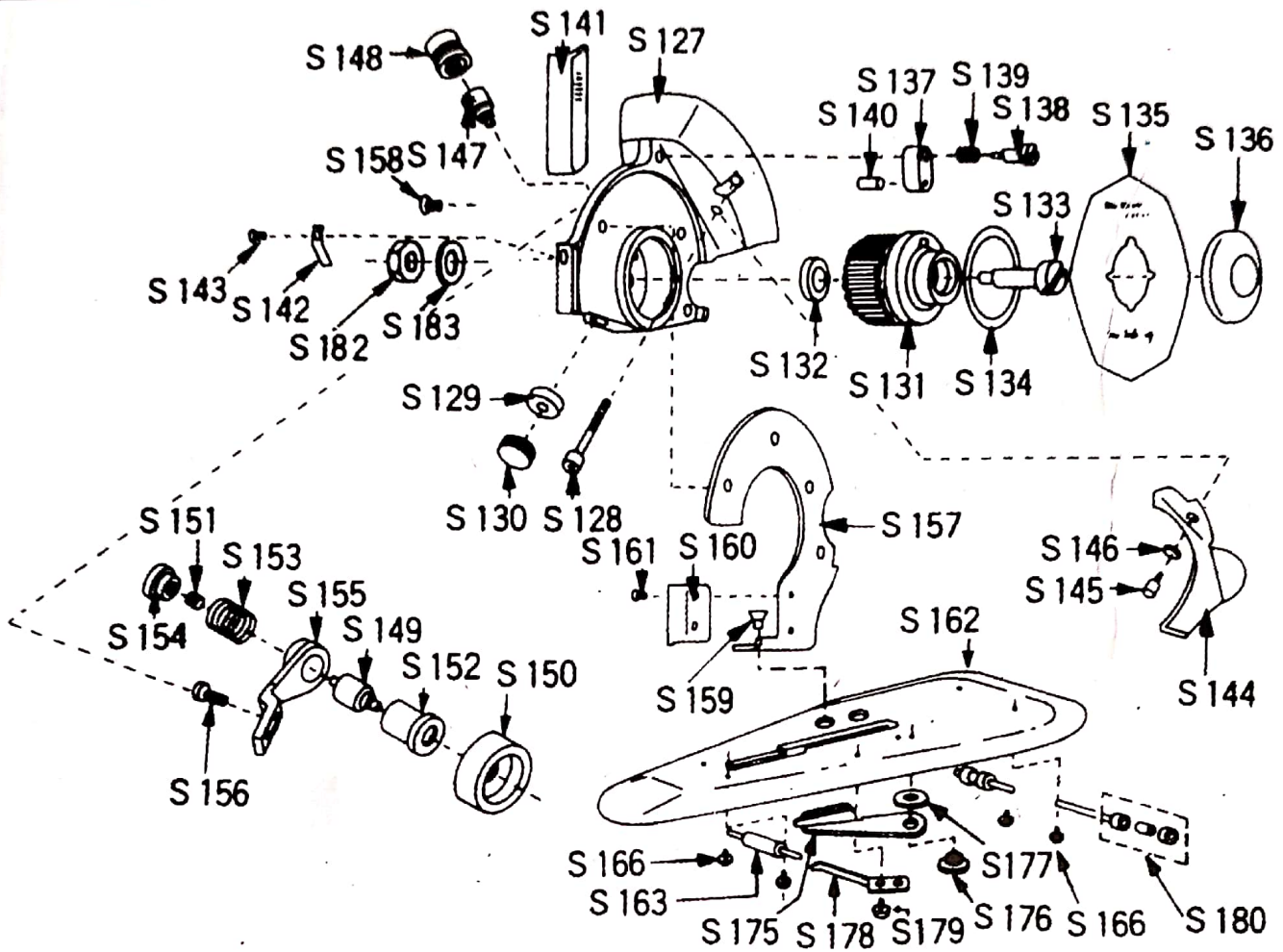
MOTOR ASSEMBLY & ACCESSORIES



Other standard accessories:

Knife (S135)	1 pc.
Carbon brush (S104)	1 set.
Grinding wheel (S150)	1 pc.
Knife oiler felt(S140)	1 pc.

STANDARD & BASE ASSEMBLY



PART NO.	PART NAME	名稱
S-101	Stator	定子
S-102	Rotor	轉子
S-103	Condenser	電容器
S-104	Carbon Brush	電刷
S-105	Cap for Carbon Brush	電刷螺帽
S-106	Wave Washer	波型墊圈
S-107	Motor Cover	電機外殼
S-108	Screw for Stator	定子螺釘
S-109	Terminal	插座
S-110	Screw for Terminal	插座螺釘
S-111	Terminal Box	插座盒

PART NO.	PART NAME	名稱
S-112	Screw for T.Box	插座盒螺釘
S-113	Terminal Plate	墊片
S-114	Rubber Bushing	護套
S-115	Air Guide	擋風片
S-116	Drive Handle	手柄
S-117	Screw for Handle	手柄螺釘
S-118	Nut for Handle	手柄螺帽
S-119	Cover for Handle	手柄蓋
S-120	Screw for Cover	手柄蓋螺釘
S-121	Switch	開關
S-122	Connecting Terminal	接綫端子
S-123	Screw for Earth	接地螺釘
S-124	Drive Gear	蝸杆
S-125	Roll Pin	銷
S-126	Bearing	軸承
S-127	Gear Box	機座
S-128	Screw for G. Box	機座螺釘
S-129	Dirve Gear Metal	軸承
S-130	Cover for Metal	軸承蓋
S-131	Knife Gear	蝸輪
S-132	Washer for Gear	墊圈
S-133	Screw for Gear	蝸輪軸
S-134	Ring for Gear	O形圈
S-135	Knife(8-sided) * Round(option)	刀片
S-136	Lock Nut for Knife	緊刀螺帽
S-137	Knife Oiler	注油器
S-138	Screw for Oiler	注油器螺釘
S-139	Spring for Oiler	彈簧
S-140	Oil Felt	油毛氈
S-141	Knife Guard	護刀器
S-142	Spring for Guard	彈簧片
S-143	Screw for Spring	彈簧片螺釘
S-144	Safety Plate	防護板
S-145	Screw for Plate	防護板螺釘
S-146	Spring washer for Plate	彈性墊圈

PART NO.	PART NAME	名稱
S-147	Grease Cup	油杯座
S-148	Cap for Grease Cup	油杯帽
S-149	Grinder Shaft	砂輪軸
S-150	Emery Wheel	砂輪
S-151	Grinder Spring	彈簧
S-152	Grinder Collar	軸套
S-153	Spring for Collar	彈簧
S-154	Sharpening Switch	磨刀器按鈕
S-155	Grinder Arm	磨刀器臂
S-156	Screw for Grinder Arm	磨刀器螺釘
S-157	Standard	支架板
S-158	Screw for Standard (upside)	支架螺釘
S-159	Screw for Standard (bottom)	支架螺釘
S-160	Guide Plate	壓片
S-161	Screw for Guide Plate	壓片螺釘
S-162	Base Plate	底盤
S-163	Front Rlooler	前軸滾子
S-164	Roller Shaft (front)	前滾子軸
S-165	Roller Shaft (rear)	後滾子軸
S-166	Screw for Roller shaft	滾子軸螺釘
S-169	Oiler	油壺
S-170	Lock Shaft	插銷軸
S-171	Grease	油脂
S-172	Cleaning Brush	刷
S-173	Wrench	板手
S-174	Code Complete with earth	電源綫
S-175	Lower Blade	下刀
S-176	Screw for Lower Blade	下刀螺釘
S-177	Washer for Lower Blade	墊圈
S-178	Pressure Spring for Lower Blade	下刀彈簧片
S-179	Screw for Pressure Spring	下刀螺釘
S-180	Rear Roller Set	後滾子組件
S-181	Switch Cap	開關護蓋
S-182	Nut for Knife Gear Screw	螺帽
S-183	Washer for Knife Gear Screw	墊圈